

# visionMAKER™

Making spatial data usable... by anyone

**waterRIDE™**

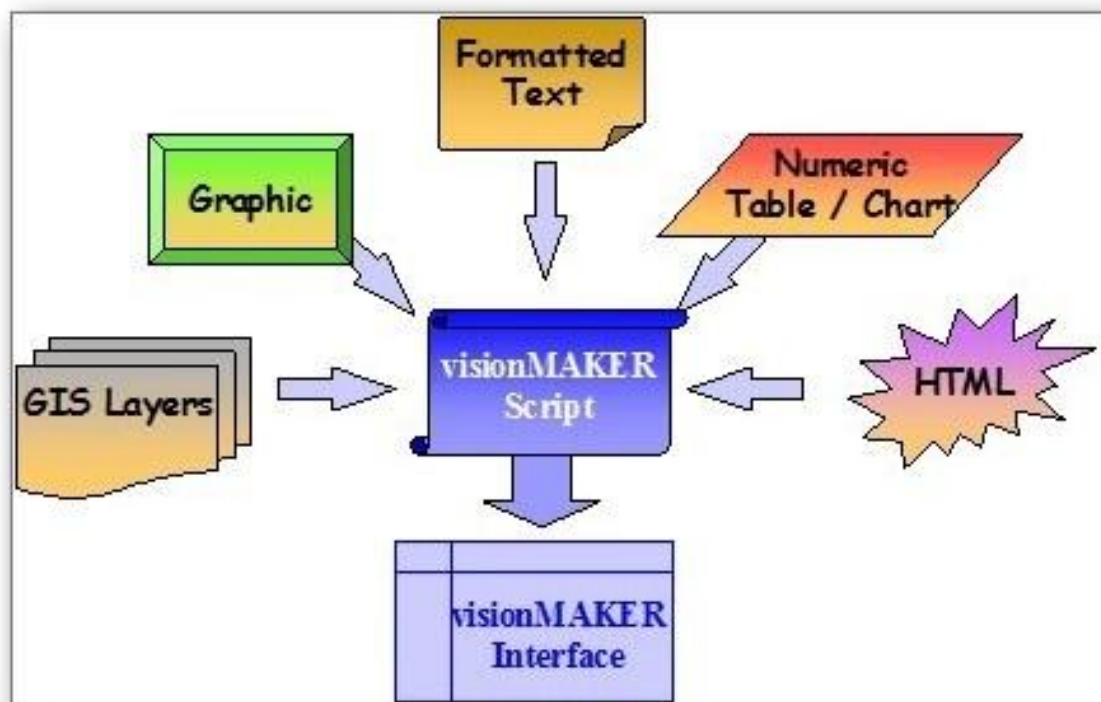
[www.waterRIDE.net](http://www.waterRIDE.net)

*The reporting and communication of information has become a multi-skilled activity demanding compatibility with a diverse range of data and information formats such as formatted text, vector and raster GIS layers, tabular data and charts, HTML, bitmaps, documents, multimedia files, spread sheets, video, photos and aerial imagery.*

*Standard GIS software can co-ordinate and display GIS layers (with associated tabular data) and some images, but much of the data formats cannot be integrated effectively into existing software packages. visionMAKER™ was created to fill the gaps, utilising an intuitive interface, allowing anyone to access datasets without needing to be a GIS expert!*

*visionMAKER™ can help you integrate just about any data formats to create an effective knowledge interface (or knowledge base) containing live GIS data that can be linked to external data formats.*

*Unlike conventional GIS applications, where it is assumed the user has knowledge of the datasets they wish to access, visionMAKER™'s unique interface allows "project developers" to setup combinations of layers, so that the end user can simply access information with a single click.*



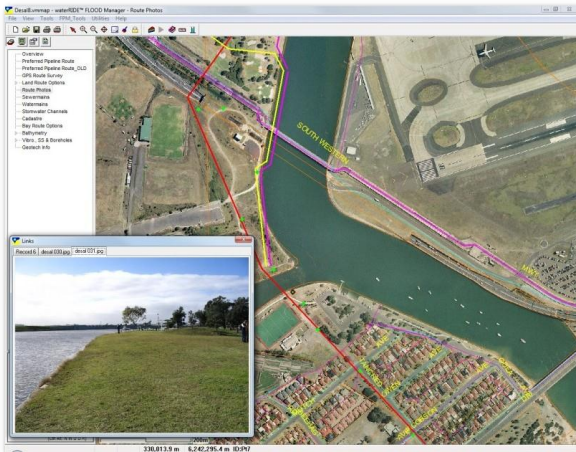
The real power of visionMAKER™ lies in its purposefully simplistic and intuitive user interface. The interface has been designed for non IT trained management and customer services staff. It is intrinsically easy to use (ie. intuitive) and allows personalised access to the underlying data. Regular data analyses can be tailored to individual user's requirements and the data is instantly updated as soon as visionMAKER™ is turned on ie. visionMAKER™ reads all data files on an "as is", live basis.

This simplicity is achieved through a "tree structured" table of contents (TOC), providing access to any number of "views". Each view contains a number of layers, setup by the "developer" as part of the "story" structured by the TOC. The end user simply clicks on the appropriate item in the tree to access the information, rather than endlessly turning layers "on and off" as with more traditional GIS approaches.

Personalised access to data, through an intuitive interface, empowers senior management with the ability to call up relevant data instantly during impromptu meetings and discussions or to assist decision making in an emergency.

visionMAKER™ is available as a creator version for development and editing of shows or scripts, and as a viewer version for distribution with the data.





## visionMAKER™ Interface

Hierarchical menu bar at left automatically expands and contracts as items are selected.

View window (right) shows GIS layers associated with current menu selection (the current view).

GIS items are highlighted as the mouse pointer is passed over them.

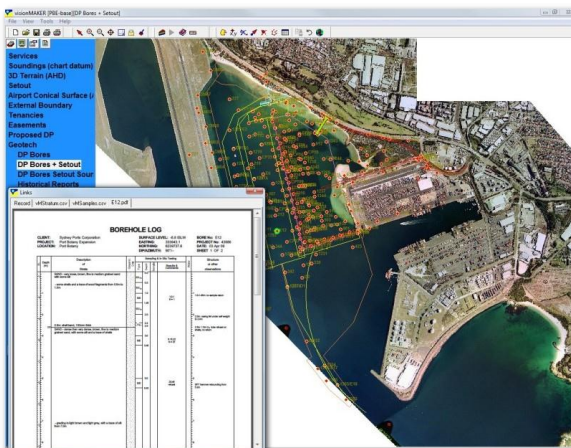
Buttons on toolbar enable panning, zooming, etc of the view window.

## The Power Of Linking

visionMAKER allows you to link any external files to entities (points, lines or polylines) in your GIS datasets.

Linking can be based on the entities themselves (ie files are linked to a specific entity) or GIS field values (files are linked to a specific value in a field, which may occur for many GIS entities). A combination of link types can also be used.

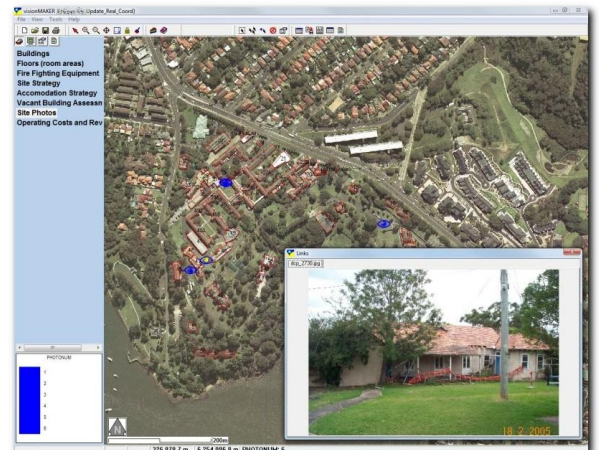
When the entity is clicked any linked file(s) are displayed in the links window, on separate tabs.



## Simple Access to "Specialised Data"

visionMAKER™ allows the end user to access "specialised" without the need to be an expert in that data (or know how to use specialised software).

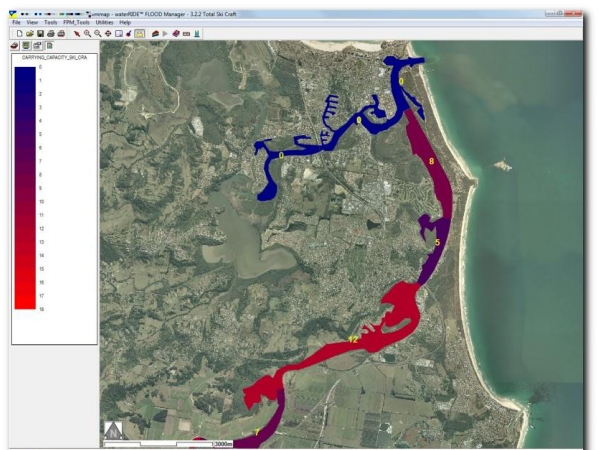
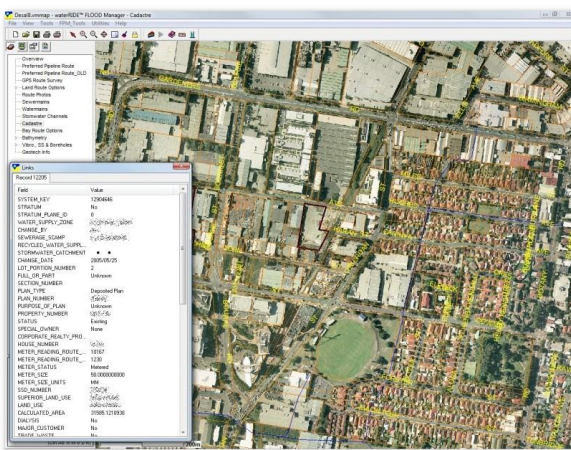
Any interpretation of the data can be included in the linked information (in this case a PDF report), allowing the end user to simply access the data they need



## Thematic Mapping

Thematic mapping of key database information can provide valuable insights into important clients, trends, areas of focus, groups or clusters and be useful in business planning and intelligence.

The value of the data at a point, or in a region is represented by its colour.



## Easy Access to GIS Data

Access GIS data without needing to be a GIS expert.

Left click on an object to bring up the GIS tabular data associated with that object.

The amount of information, and the style that it can be displayed in, is limited only by the imagination of the user.